

XscreenKey Verti

User Guide v2.0

- **Legal**
- **Before You Start**
- **Using XscreenKey Verti**

Legal

Limitation of Liability

The XscreenKey Verti software and the accompanying softwares and materials ("SOFTWARE PRODUCT" or "SOFTWARE") are provided "AS IS" without warranty of any kind. IN NO EVENT SHALL THE AUTHOR(S) AND/OR CROSS-DISCIPLINE TECHNOLOGY BE LIABLE FOR ANY DAMAGES WHATSOEVER (INCLUDING, BUT NOT LIMITED TO, DIRECT, INDIRECT, SPECIAL, INCIDENTAL, OR CONSEQUENTIAL DAMAGES, LOST PROFITS) ARISING OUT OF THE USE OF OR INABILITY TO USE THIS SOFTWARE PRODUCT, EVEN IF THE AUTHOR(S) AND/OR CROSS-DISCIPLINE TECHNOLOGY HAVE BEEN ADVISED OF THE POSSIBILITY OF SUCH DAMAGE. The entire risk arising out of use or performance of the SOFTWARE PRODUCT remains with you.

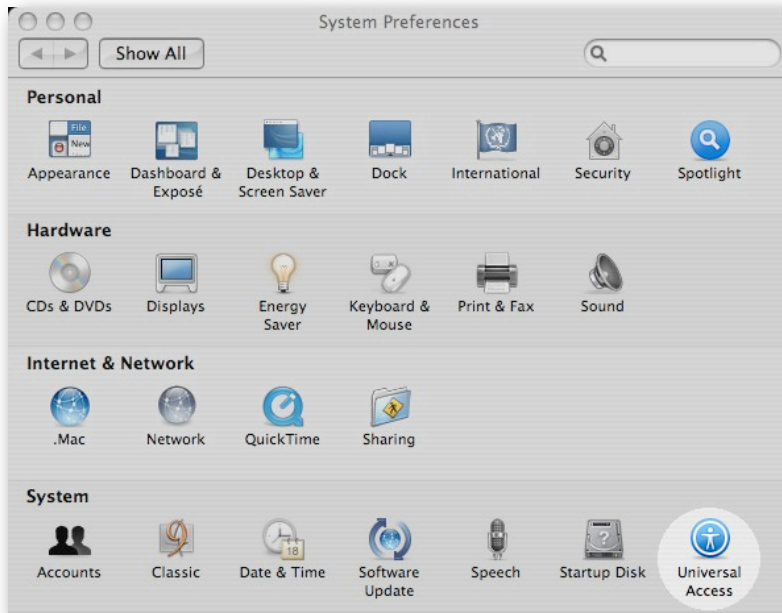
Legal

Installation and Activation (Registration)

Please follow the “Installation Guide” to install and activate XscreenKey Verti

Enabling Access for Assistive Devices

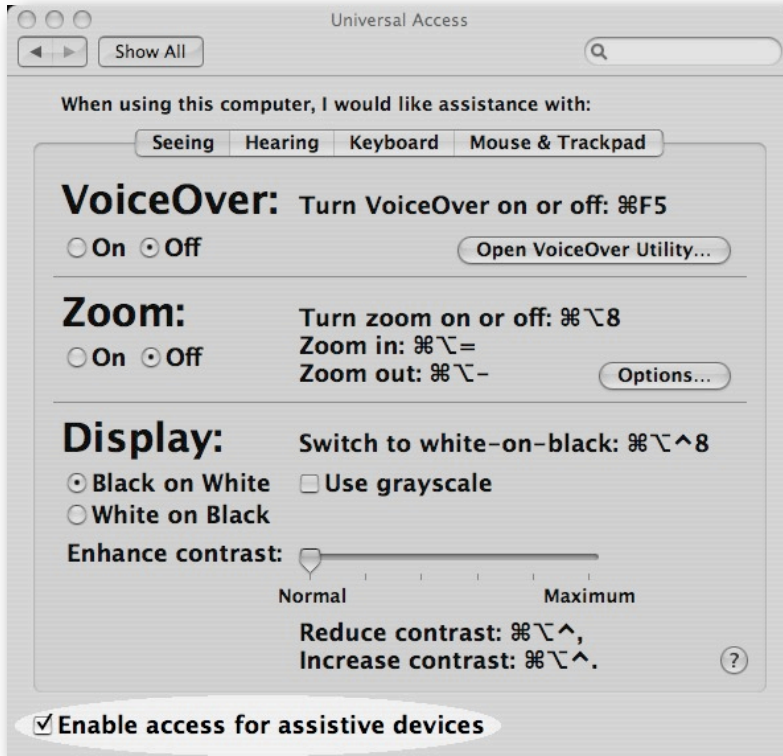
XscreenKey Verti requires that you enable access for assistive devices in the “Universal Access” pane of the System Preferences



For Mac OS 10.4

- Open System Preferences
- Select Universal Access

Legal



- Select the checkbox next to “Enable access for assistive devices” within the Universal Access Pane

Note:

If you launch XscreenKey Verti without enabling access for assistive devices, XscreenKey Verti will prompt you to enable access for assistive devices. If you prefer, XscreenKey Verti will open the “Universal Access” preferences pane for you.

Using XscreenKey Verti

Starting XscreenKey Verti

Double click on the XscreenKey Verti icon to launch XscreenKey Verti.

Note:

- XscreenKey Verti will NOT appear on the Dock after launching. If you want to access XscreenKey Verti from the Dock, you need to drag the XscreenKey Verti icon onto the Dock.
- You can NOT resize XscreenKey Verti, but you can minimize XscreenKey Verti



Using XscreenKey Verti

XscreenKey Verti Layout

XscreenKey Verti has 3 panels:

1. Application panel ●
2. Body panel ●
3. Special panel ●



Using XscreenKey Verti

The Application Panel

The Application Panel contains 3 circular buttons. These buttons are:

1. the “handler” button (top)
2. the “close window” button (middle)
3. the “minimize window” button (bottom)

Moving XscreenKey Verti

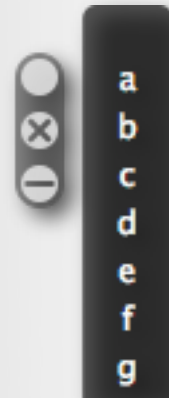
To moving XscreenKey Verti around, simply drag on the “handler” button with the mouse or tablet pen.

Quitting XscreenKey Verti

To quit XscreenKey Verti, simply press the “close window” button on the upper left corner of XscreenKey Verti.

Minimizing XscreenKey Verti

To minimizing XscreenKey Verti, simply press the “minimize window” button on the upper left corner of XscreenKey Verti.



Using XscreenKey Verti

Switching Between Themes

As of version 2.0, the interface of XscreenKey Verti can be switched between the following themes:

- HUD interface
- Blue interface

To switch between the interface themes, simply right click on the “handler” button (the circular button on top).

Note:

Right click emulation by “Control + Click” does not work.



Using XscreenKey Verti

The Body Panel

The Body Panel is where you click to type. The Body Panel can be switched between 2 modes:

1. Character Mode
2. Numeric Mode

Note:

The “Space” keys are located both on top and bottom in character mode. In numeric mode, the “Space” key is located at the bottom of the body panel.

Switching Between Character Mode and Numeric Mode

Right click anywhere on the Body Panel to switch between character mode and numeric mode.

Note:

Right click emulation by “Control + Click” does not work.



Using XscreenKey Verti

The Special Panel

The Special Panel contains 3 types of special function buttons and keys:

1. the “Lock” button (top)
2. common text editing keys including “tab”, “return” and “delete”
3. modifier keys including “shift”, “caps lock”, “command”, “option” and “control”

Locking Modifier Keys

By default, modifier keys including “shift”, “control”, “option” and “command” are released automatically whenever other keys are pressed. Press the “Lock” button to disable the auto-release feature of the modifier keys. Press the “Lock” button again to restore the auto-release function.

Hiding Text Hints on the Special Panel

You may want to hide the text hints next the special keys panel. Right click on any key on the special keys panel to hide text hints. Right click again to show text hints

Note:

Right click emulation by “Control + Click” does not work.

Click here to lock / unlock modifier keys

