

# XscreenKey Chameleon



## User Guide v1.5

- Legal
- Before You Start
- Using XscreenKey Chameleon

# Legal

---

## **Limitation of Liability**

The XscreenKey Chameleon software and the accompanying softwares and materials ("SOFTWARE PRODUCT" or "SOFTWARE") are provided "AS IS" without warranty of any kind. IN NO EVENT SHALL THE AUTHOR(S) AND/OR CROSS-DISCIPLINE TECHNOLOGY BE LIABLE FOR ANY DAMAGES WHATSOEVER (INCLUDING, BUT NOT LIMITED TO, DIRECT, INDIRECT, SPECIAL, INCIDENTAL, OR CONSEQUENTIAL DAMAGES, LOST PROFITS) ARISING OUT OF THE USE OF OR INABILITY TO USE THIS SOFTWARE PRODUCT, EVEN IF THE AUTHOR(S) AND/OR CROSS-DISCIPLINE TECHNOLOGY HAVE BEEN ADVISED OF THE POSSIBILITY OF SUCH DAMAGE. The entire risk arising out of use or performance of the SOFTWARE PRODUCT remains with you.

# Before You Start

---

## System Requirement

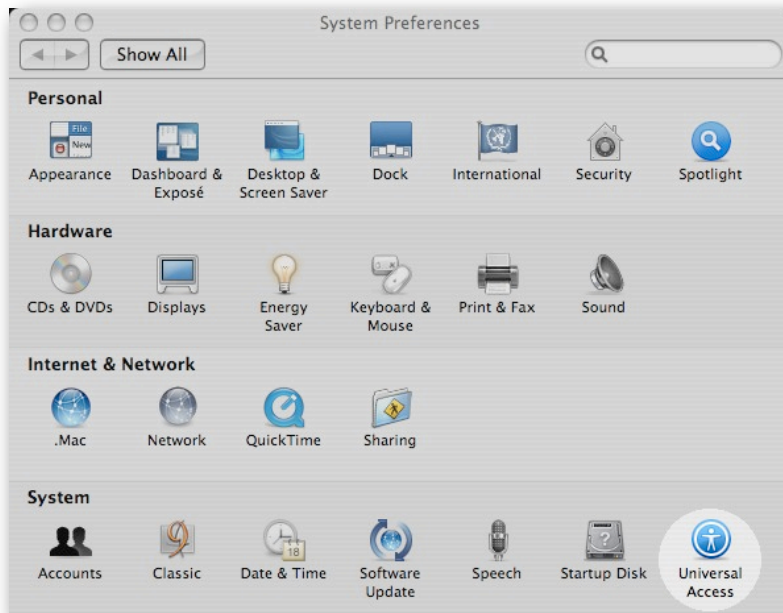
XscreenKey Chameleon requires Mac OS X 10.4.9 (Intel or PPC)

## Installation and Activation (Registration)

Please follow the installation instruction to install and activate XscreenKey Chameleon

## Enabling Access for Assistive Devices

XscreenKey Chameleon requires that you enable access for assistive devices in the “Universal Access” pane of the System Preferences.



## For Mac OS 10.4

- Open System Preferences
- Select Universal Access

# Before You Start

---



- Select the checkbox next to “Enable access for assistive devices” within the Universal Access Pane

## Note:

If you launch XscreenKey Chameleon without enabling access for assistive devices, XscreenKey Chameleon will prompt you to enable access for assistive devices. If you prefer, XscreenKey Chameleon will open the “Universal Access” preferences pane for you.

# Using XscreenKey Chameleon

---

## Starting XscreenKey Chameleon

Double click on the XscreenKey Chameleon icon to launch XscreenKey Chameleon.



### Note:

- XscreenKey Chameleon will NOT appear on the Dock after launching. If you want to access XscreenKey Chameleon from the Dock, you need to drag the XscreenKey Chameleon icon onto the Dock.
- You can NOT resize XscreenKey Chameleon, but you can minimize XscreenKey Chameleon

## Quitting XscreenKey Chameleon

To quit XscreenKey Chameleon, simply press the “close window” button on the upper left corner of XscreenKey Chameleon.

# Using XscreenKey Chameleon

---

## Setting Transparency

You can set XscreenKey Chameleon to semi-transparent so that you can still see, for example, the whole web page without having to move XscreenKey Chameleon around.

- Click on the “Settings” button to reveal the Settings Drawer.
- Drag the slider under “Transparency” to change the transparency of XscreenKey Chameleon (Note that the transparency of the Settings Drawer will remain unchanged).
- Click on the “Settings” button again to close the Settings Drawer. Your transparency setting will be saved.



# Using XscreenKey Chameleon

---

## Automatic Transparent Mode

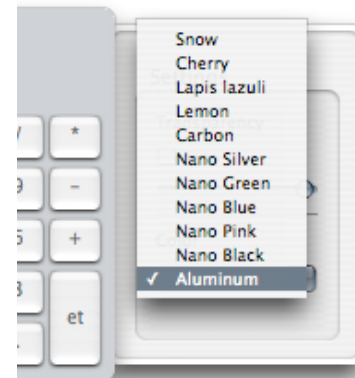
Sometimes you may want XscreenKey Chameleon to appear less transparent (or more solid) when you use it and then become more transparent so you can see through for contents underneath when you are not using it for a short while.

Automatic Transparent Mode allow XscreenKey Chameleon to switch automatically between these two situations for you. When you move your mouse cursor over XscreenKey Chameleon, it becomes more solid in color (or appear with your preset transparency) and then switch back to a more transparent state when you move your mouse cursor away.

Check the check box next to “Auto” in the “Settings” drawer to enable Automatic Transparent Mode. The Automatic Transparent Mode takes effect after you close the “Settings” drawer.

## Changing Color

To change the color of XscreenKey Chameleon, simply select the corresponding color in the color drop down menu of the Settings Drawer.

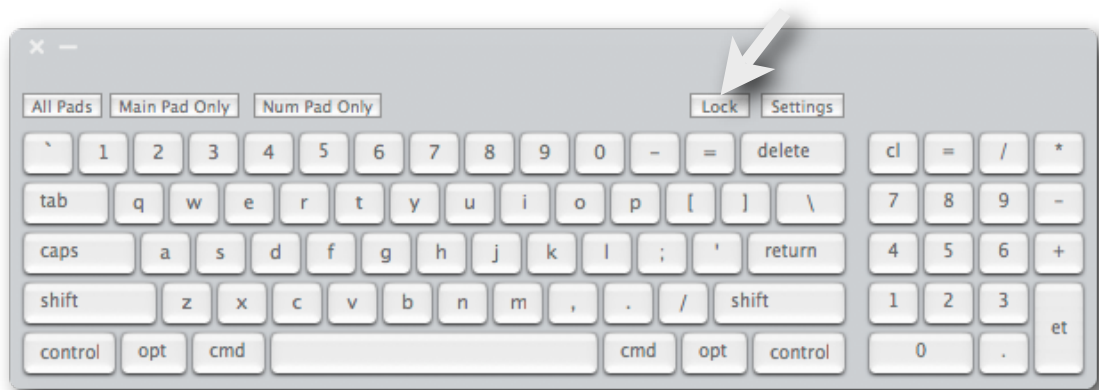


# Using XscreenKey Chameleon

---

## Locking Modifier Keys

By default, modifier keys including “shift”, “control”, “option” and “command” are released automatically whenever other keys are pressed. Press the “Lock” button to disable the auto-release feature of the modifier keys. Press the “Lock” button again to restore the auto-release function.





# Using XscreenKey Chameleon

---

## Changing Keypad View

XscreenKey Chameleon can be set to display in the following 3 viewing modes:

- Full pad (“All Pads”)
- Character pad (“Main Pad Only”)
- Number pad (“Num Pad Only”)

You can click on the corresponding buttons to switch among the viewing modes.

