

User Guide v1.5

- **Legal**
- **Before You Start**
- **Using XscreenKey**
- **Administrative Settings**

Legal

Limitation of Liability

The XscreenKey software and the accompanying softwares and materials ("SOFTWARE PRODUCT" or "SOFTWARE") are provided "AS IS" without warranty of any kind. IN NO EVENT SHALL THE AUTHOR(S) AND/OR CROSS-DISCIPLINE TECHNOLOGY BE LIABLE FOR ANY DAMAGES WHATSOEVER (INCLUDING, BUT NOT LIMITED TO, DIRECT, INDIRECT, SPECIAL, INCIDENTAL, OR CONSEQUENTIAL DAMAGES, LOST PROFITS) ARISING OUT OF THE USE OF OR INABILITY TO USE THIS SOFTWARE PRODUCT, EVEN IF THE AUTHOR(S) AND/OR CROSS-DISCIPLINE TECHNOLOGY HAVE BEEN ADVISED OF THE POSSIBILITY OF SUCH DAMAGE. The entire risk arising out of use or performance of the SOFTWARE PRODUCT remains with you.

Before You Start

System Requirement

XscreenKey requires Mac OS X 10.4.10 (Tiger) or 10.5 (Leopard) (Intel or PPC)

Installation and Activation (Registration)

Please follow the installation instruction to install and activate XscreenKey

Enabling Access for Assistive Devices

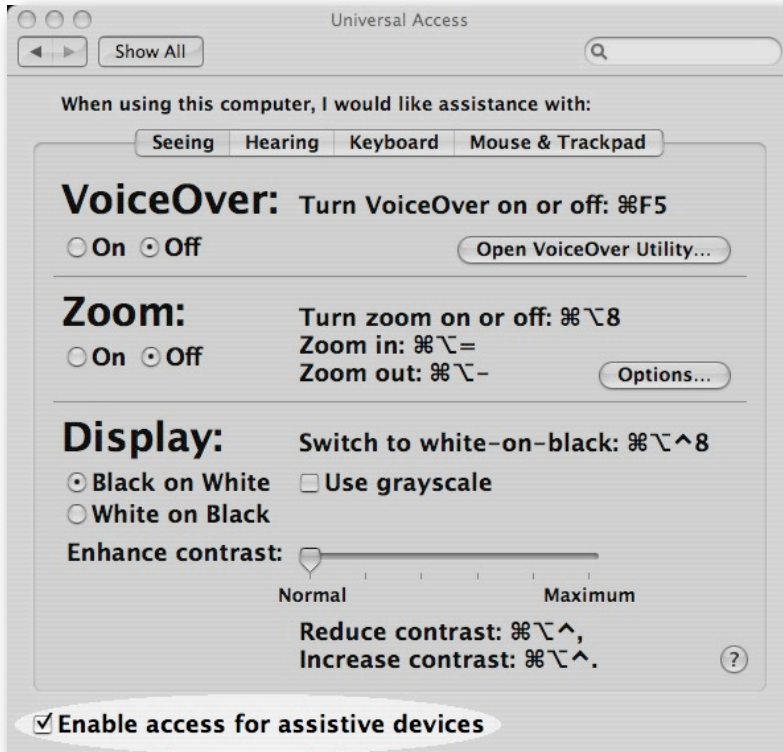
XscreenKey requires that you enable access for assistive devices in the “Universal Access” pane of the System Preferences.



Steps

- Open System Preferences
- Select **Universal Access**

Before You Start



- Select the checkbox next to **“Enable access for assistive devices”** within the Universal Access Pane

Note:

If you launch XscreenKey without enabling access for assistive devices, XscreenKey will prompt you to enable access for assistive devices. If you prefer, XscreenKey will open the “Universal Access” preferences pane for you.

Using XscreenKey

Starting XscreenKey

Double click on the XscreenKey icon to launch XscreenKey.



Note:

- XscreenKey will NOT appear on the Dock after launching. If you want to access XscreenKey from the Dock, you need to drag the XscreenKey icon onto the Dock.
- You can NOT resize XscreenKey, but you can minimize XscreenKey

Quitting XscreenKey

Normally, users can quit XscreenKey simply by clicking on the “close window” button on the upper left corner of XscreenKey. However, if you don’t want users to be able to quit XscreenKey with the “close window” button, you can use the administrative utility “XscreenKey Settings” to disable this feature. See “Restricting Users from Quitting XscreenKey” under “Administrative Settings” for more information

Using XscreenKey

Different Appearance under Leopard and Tiger

XscreenKey has different “skin” (appearance) when launched under Leopard (Mac OS X 10.5) and Tiger (Mac OS X 10.4).



XscreenKey under Leopard



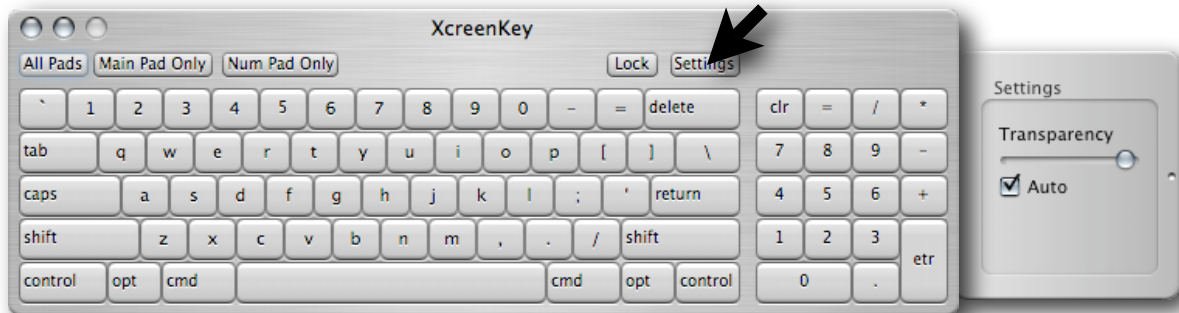
XscreenKey under Tiger

Using XscreenKey

Setting Transparency

You can set XscreenKey to semi-transparent so that you can still see, for example, the whole web page without having to move XscreenKey around.

- Click on the “Settings” button to reveal the Settings Drawer.
- Drag the slider under “Transparency” to chance the transparency of XscreenKey (Note that the transparency of the Settings Drawer will remain unchanged).
- Click on the “Settings” button again to close the Settings Drawer. Your transparency setting will be saved.



Using XscreenKey

Automatic Transparent Mode

Sometimes you may want XscreenKey to appear less transparent (or more solid) when you use it and then become more transparent so you can see through for contents underneath when you are not using it for a short while.

Automatic Transparent Mode allow XscreenKey to switch automatically between these two situations for you. When you move your mouse cursor over XscreenKey, it becomes more solid in color (or appear with your preset transparency) and then switch back to a more transparent state when you move your mouse cursor away.

Check the check box next to “Auto” in the “Settings” drawer to enable Automatic Transparent Mode. The Automatic Transparent Mode takes effect after you close the “Settings” drawer.

Locking Modifier Keys

By default, modifier Keys including “shift”, “control”, “option” and “command” are released automatically whenever other keys are pressed. Press the “Lock” button to disable the auto-release feature of the modifier keys. Press the “Lock” button again to restore the auto-release function.



Using XscreenKey

Keypad Mode Switching

XscreenKey can be set among the following 3 modes:

- Full pad (“All Pads”)
- Character pad (“Main Pad Only”)
- Number pad (“Num Pad Only”)

You can click on the corresponding buttons to switch among the keypad modes.



Administrative Settings

Features

One of the most common applications of software keyboards is on kiosk terminals for public users. In this case, you may want to limit certain features of the software keyboard to protect your kiosk terminal.

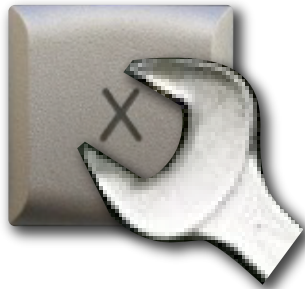
XscreenKey features the following administrative settings:

- Disabling modifier keys (i.e. command (“cmd”), option (“opt”) and control (“control”) keys). This keeps users from performing system commands
- Disabling the “close window” button so as to restrict users from quitting XscreenKey
- Disabling keypad mode switching. You may, for example, allow only the number pad to be accessed
- Disabling the “Settings” button so that users cannot change the transparency of XscreenKey.

Administrative Settings

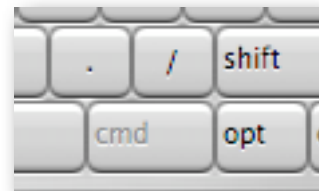
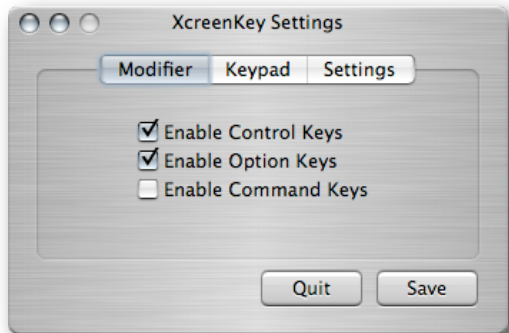
Launching the “XscreenKey Settings” Application

To access the administrative settings features, you need to launch the “XscreenKey Settings” application (located in the same folder as XscreenKey, if you followed the installation instruction).



Disabling Modifier Keys

In the XscreenKey Settings window, select the “Modifier” tab. Uncheck the checkbox next to the corresponding modifier key you want to disable.



Administrative Settings

Restricting Users from Quitting XscreenKey

You can restrict users, e.g. on public kiosks, from quitting XscreenKey with the “close window” button on XscreenKey. Select the “Keypad” tab. Uncheck the checkbox “Allow User to Quit XscreenKey”.



You need to launch the utility “Quit XscreenKey” to quit XscreenKey if you disabled the “close window” button. The “Quit XscreenKey” utility is located in the same folder as XscreenKey, if you followed the installation instruction.

Disabling Keypad Mode Switching

Select the “Keypad” tab. Uncheck the checkbox “Allow Keypad Mode Switching” to disable this feature. You can impose a default keypad mode with the “Preset Keypad Mode” option.

Administrative Settings

Disabling Settings Button

Select the “Settings” tab. Uncheck the checkbox “Allow Access to “Settings”” to disable the Settings button.

You may choose to impose a default transparency to XscreenKey with the “Preset Transparency” option.

You may also impose a default Automatic Transparent Mode with the “Auto Transparent Mode” option.



Saving Administrative Settings

You need to press the “Save” buttons to save your settings.

The saved setting will not take effect until you quit and launch XscreenKey again. Disabled keys are dimmed on Xscreenkey.